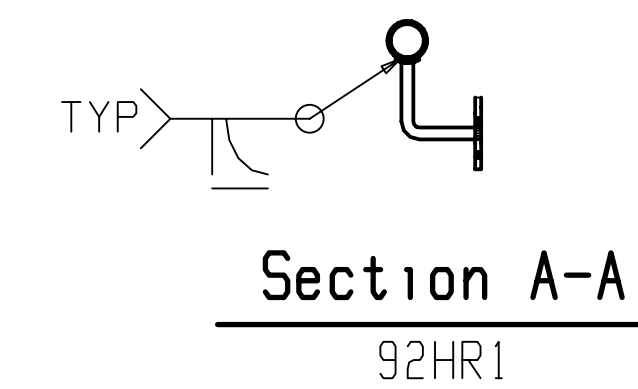


ONE WALL RAIL 87HR1



**BILL OF MATERIAL**

| LINE # | QTY | PC MARK | DESCRIPTION     | LENGTH    | REMARKS      | WEIGHT TOTAL | ADVANCE MILL # |
|--------|-----|---------|-----------------|-----------|--------------|--------------|----------------|
|        | ONE | 87HR1   | WALL RAIL       |           |              |              | 40             |
|        | 1   | hss1754 | PIPE 1 1/4 STD  | 16 4/8    | S.S          |              | 37             |
|        | 1   | hss1708 | PIPE 1 1/4 STD  | 0 2 13/16 | S.S          |              | 1              |
|        | 5   | p824    | PL 1/4 x 3      |           | A36          |              | 3              |
|        | 1   | p1021   | PL 1/4 x 1 1/2  |           | A36          |              | 0              |
|        | 5   |         | SADDLE BRACKETS |           | WAGNER #S101 |              |                |
|        | 1   |         | SECTION CUT 1   |           |              |              |                |

- ALL MATERIAL TO BE A36 UNLESS NOTED
- ALL TUBES TO BE A500-GRB (Fy=46) UNLESS NOTED
- ALL PIPES TO BE A53-GRB UNLESS NOTED
- ALL HS SHOP BOLTS TO BE TORQUED UNLESS NOTED
- ALL RUNNING DIMENSIONS FROM END OF MAIN MATERIAL
- ALL SHOP WELDS TO BE E70XX-LH ELECTRODES
- ALL COPES TO BE RADIUS
- ALL BEAM TO BE FABRICATED WITH RESIDUAL CAMBER UP
- MEMBERS ARE TO BE ERECTED SO THAT MARKED END IS IN SAME LOCATION AS ON ERECTION DRAWING